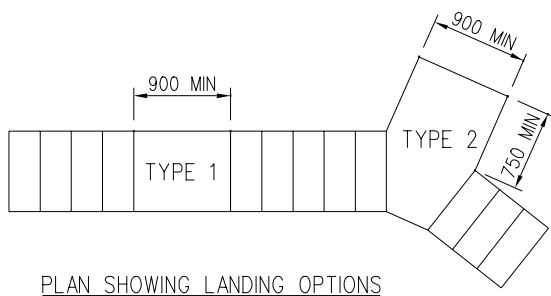
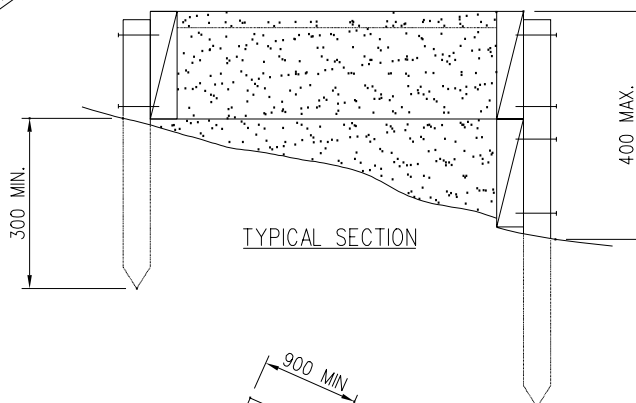


Pedestrian Way	Tread depth	Riser height
Walking Path	Min 310mm	150<h<180
Tramping Track	Min 260mm	150mm<h<200mm



GENERAL NOTES

DRAINAGE CONTROL TO BE PROVIDED AT 3M MAXIMUM SPACING. THIS MAY CONSIST OF EXTENDED RISES, FLUMES, OR TIMBER CULVERTS. PROVIDE LANDING EVERY 12 STEPS. LANDING SHALL CONSIST OF AT LEAST 900mm LEVEL STEP. ALL TIMBER TO BE H5 TREATED.



Head Office: 50 Centreway Road, Orewa  
Private Bag 500, Orewa, 1461, New Zealand  
Tel: 0800 4265169, Fax (09) 4267280  
Email: info@rodney.govt.nz

26 February 2009

STANDARD DETAIL:

**STANDARD BOX STEPS  
DETAIL FOR STRAIGHT  
RUNS**

Copyright on this Drawing is Reserved

DATE: June 2005

NOT TO SCALE

RDC NO:

SHEET NO:

REV:

18000 7.14