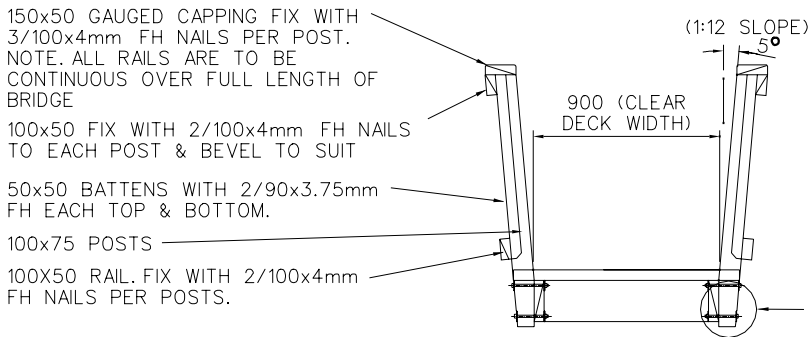
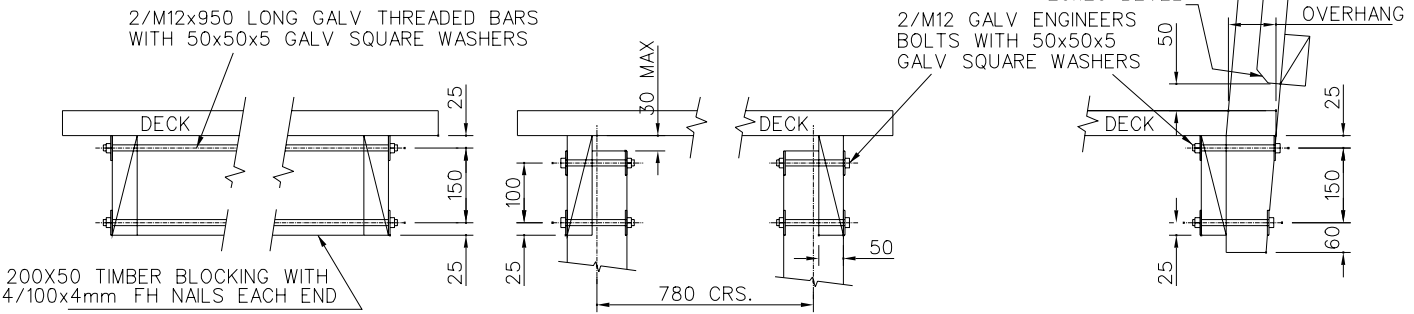


ELEVATION



TYPICAL SECTION AT HANDRAIL POSTS



DETAIL A

DETAIL B

DETAIL C

GENERAL NOTES

TIMBER TREATMENT

1. ROUND OR SAWN PILES OR POLES IN CONTACT WITH GROUND TO BE H5.
 2. SAWN TIMBER NOT IN CONTACT WITH GROUND TO BE H3.
 3. SAWN TIMBER IN CONTACT WITH GROUND TO BE H5.
- TREATMENT SHALL COMPLY WITH THE CURRENT REQUIREMENTS OF THE TIMBER PRESERVATION COUNCIL. ALL TIMBER SHALL BE BRANDED WITH THE APPROPRIATE WOODMARK. IT IS PREFERRED THAT TIMBERS BE TREATED AT LEAST 2 MONTHS PRIOR TO USE.

- NAILS
1. 50mm DECKING FIXING 90x3.15 FH/JH.
 2. GENERAL STRUCTURAL USE 100x4 FH. - ALL NAILS SHALL BE HOT DIPPED GALVANISED. REFER TO SPECIFICATIONS FOR SEA SPRAY AREA BOLTS
- BOLTS SHALL BE M12 HOT DIPPED GALVANISED ENGINEERS BOLTS FITTED WITH 50x50x5 GALVANISED SQUARE WASHERS BOTH ENDS. ALL GALVANISED BOLTS IN CONTACT WITH TREATED TIMBER SHALL BE PROTECTED USING GP GREASE IN PRE GREASED HOLES. REFER TO SPECIFICATIONS FOR SEA SPRAY AREAS.
- LOAD CAPACITY
LOADINGS COMPLY WITH NZBC AS FOLLOWS: 4 kN/m² PEDESTRIAN LOAD. 7.5 kN LIGHT MAINTENANCE VEHICLE LOAD

Head Office: 50 Centreway Road, Orewa
Private Bag 500, Orewa, 1461, New Zealand
Tel: 0800 4265169, Fax (09) 4267280
Email: info@rodney.govt.nz

STANDARD DETAIL:
**STANDARD FOOTBRIDGE
MAX SPAN 2.5M**

Copyright on this Drawing is Reserved
DATE: June 2005
NOT TO SCALE

RDC NO: SHEET NO: REV:

18000 7.15