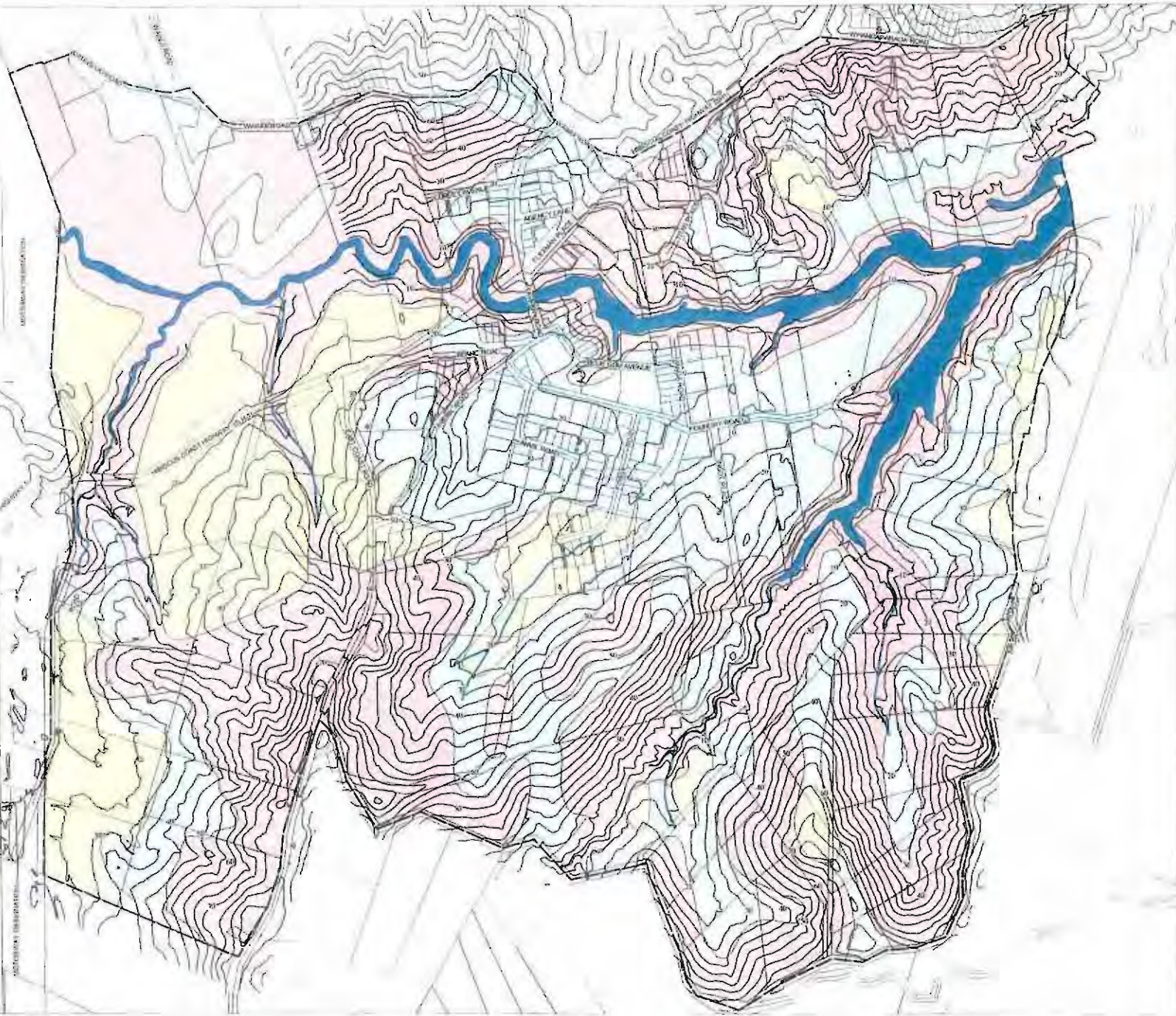


Silverdale South Development Zone Map



- Legend:**
- Zones:
- Zone A  
Available for development
  - Zone B  
Likely to be suitable for development
  - Zone C  
Likely to require significant remedial works in order to be suitable for development or have development constraints
- General:
- Boundary of Silverdale South structure plan area
  - Contours (1m intervals)
  - River/blowans



NOTE: This figure is presented as graphical representation of the text and should not be used as a site investigation database. No distances or angles should be measured from this map.