

- Targeted Riparian Planting Project Areas
- Catchment
- Streams and tributaries**
- MAIN STREAM (recommended 20m riparian margin each side)
- 1st ORDER TRIBUTARY (recommended 15m riparian margin each side)
- Bush Lot
- RDC\_Lands

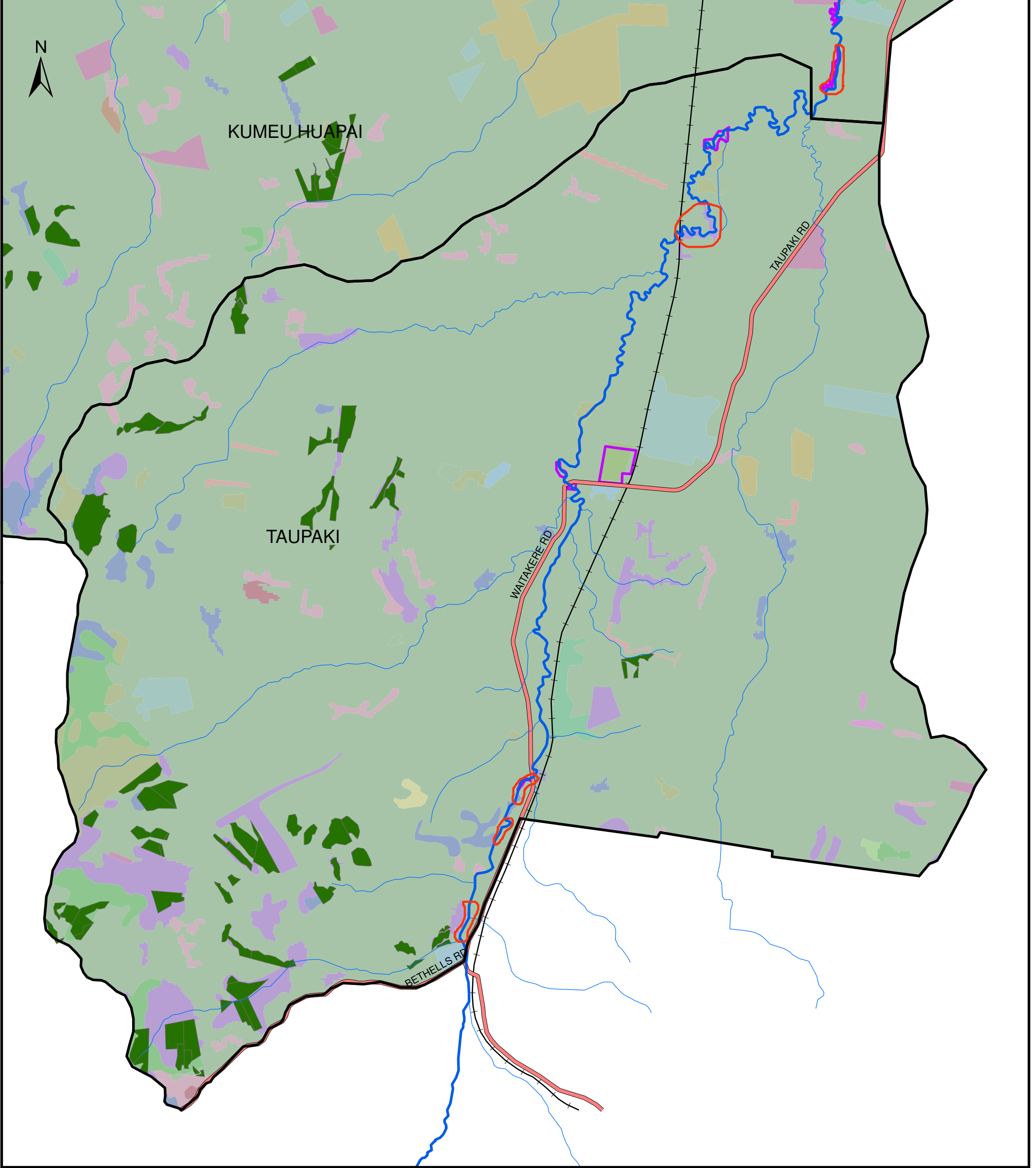
- |  |   |   |
|--|---|---|
| <ul style="list-style-type: none"> <li><span style="color: magenta;">■</span> Afforestation (imaged, post LCDB 1)</li> <li><span style="color: green;">■</span> Broadleaved Indigenous Hardwoods</li> <li><span style="color: lightblue;">■</span> Built-up Area</li> <li><span style="color: brown;">■</span> Deciduous Hardwoods</li> <li><span style="color: olive;">■</span> Dump</li> <li><span style="color: purple;">■</span> Forest Harvested</li> <li><span style="color: red;">■</span> Gorse and Broom</li> <li><span style="color: teal;">■</span> Herbaceous Freshwater Vegetation</li> <li><span style="color: grey;">■</span> Herbaceous Saline Vegetation</li> </ul> | <ul style="list-style-type: none"> <li><span style="color: lightgreen;">■</span> High Producing Exotic Grassland</li> <li><span style="color: blue;">■</span> Indigenous Forest</li> <li><span style="color: lightgreen;">■</span> Lake and Pond</li> <li><span style="color: brown;">■</span> Major Shelterbelts</li> <li><span style="color: tan;">■</span> Mangrove</li> <li><span style="color: purple;">■</span> Manuka and or Kanuka</li> <li><span style="color: grey;">■</span> Mixed Exotic Shrubland</li> <li><span style="color: teal;">■</span> Orchard and Other Perennial Crops</li> <li><span style="color: pink;">■</span> Other Exotic Forest</li> </ul> | <ul style="list-style-type: none"> <li><span style="color: olive;">■</span> Pine Forest - Closed Canopy</li> <li><span style="color: green;">■</span> Pine Forest - Open Canopy</li> <li><span style="color: blue;">■</span> River</li> <li><span style="color: magenta;">■</span> Short-rotation Cropland</li> <li><span style="color: purple;">■</span> Surface Mine</li> <li><span style="color: green;">■</span> Urban Parkland/ Open Space</li> <li><span style="color: olive;">■</span> Vineyard</li> </ul> |
|--|---|---|

Rev	Description	App	Date



**URS New Zealand**  
 Engineering and Environmental Management  
 6th Floor  
 URS Centre  
 13 - 15 College Hill  
 Auckland  
 P.O. Box 821  
 Auckland  
 New Zealand  
 Tel 09 355 1300  
 Fax 09 355 1333

POTENTIAL RIPARIAN PLANTING			
File:	42068778\mouse.mxd	Designed:	<b>FP</b>
Scale:	1:35,000	Drawn:	<b>FP</b>
Original Size:	<b>A3</b>	Checked:	<b>JG</b>
Date Created:	<b>18 Feb 2010</b>	Approved:	<b>JB</b>
Status		<b>DRAFT</b>	
Drawing Number		<b>Figure 9-1</b>	
Rev		<b>A</b>	



- Targeted Riparian Planting Project Areas
- Catchment
- Streams and tributaries**
- MAIN STREAM (recommended 20m riparian margin each side)
- 1st ORDER TRIBUTARY (recommended 15m riparian margin each side)
- Bush Lot
- RDC\_Lands

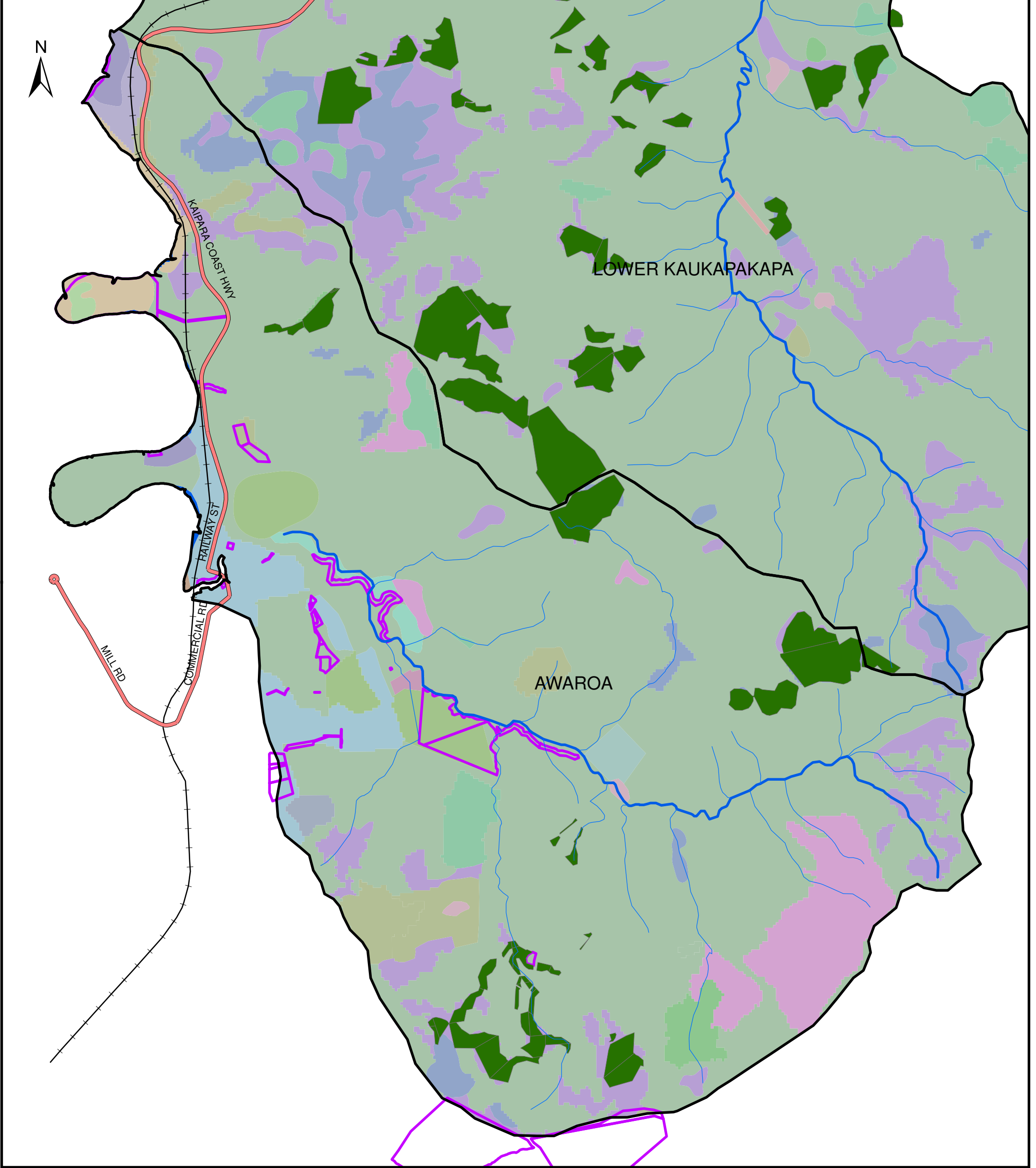
- Afforestation (imaged, post LCDB 1)
- Broadleaved Indigenous Hardwoods
- Built-up Area
- Deciduous Hardwoods
- Dump
- Forest Harvested
- Gorse and Broom
- Herbaceous Freshwater Vegetation
- Herbaceous Saline Vegetation
- High Producing Exotic Grassland
- Indigenous Forest
- Lake and Pond
- Major Shelterbelts
- Mangrove
- Manuka and or Kanuka
- Mixed Exotic Shrubland
- Orchard and Other Perennial Crops
- Other Exotic Forest
- Pine Forest - Closed Canopy
- Pine Forest - Open Canopy
- River
- Short-rotation Cropland
- Surface Mine
- Urban Parkland/ Open Space
- Vineyard

Rev	Description	App	Date



**URS New Zealand**  
 Engineering and Environmental Management  
 6th Floor  
 URS Centre  
 13 - 15 College Hill  
 Auckland  
 P.O. Box 821  
 Auckland  
 New Zealand  
 Tel 09 355 1300  
 Fax 09 355 1333

POTENTIAL RIPARIAN PLANTING			
File:	42068778\mouse.mxd	Designed:	<b>FP</b>
Scale:	1:25,000	Drawn:	<b>FP</b>
Original Size:	<b>A3</b>	Checked:	<b>JG</b>
Date Created:	<b>18 Feb 2010</b>	Approved:	<b>JB</b>
Status		<b>DRAFT</b>	
Drawing Number		<b>Figure 9-2</b>	
Rev		<b>A</b>	



Targeted Riparian Planting Project Areas

Catchment

**Streams and tributaries**

- MAIN STREAM (recommended 20m riparian margin each side)
- 1st ORDER TRIBUTARY (recommended 15m riparian margin each side)
- Bush Lot
- RDC\_Lands

- Afforestation (imaged, post LCDB 1)
- Broadleaved Indigenous Hardwoods
- Built-up Area
- Deciduous Hardwoods
- Dump
- Forest Harvested
- Gorse and Broom
- Herbaceous Freshwater Vegetation
- Herbaceous Saline Vegetation
- High Producing Exotic Grassland
- Indigenous Forest
- Lake and Pond
- Major Shelterbelts
- Mangrove
- Manuka and or Kanuka
- Mixed Exotic Shrubland
- Orchard and Other Perennial Crops
- Other Exotic Forest
- Pine Forest - Closed Canopy
- Pine Forest - Open Canopy
- River
- Short-rotation Cropland
- Surface Mine
- Urban Parkland/ Open Space
- Vineyard

Rev	Description	App	Date



**URS New Zealand**  
 Engineering and Environmental Management  
 6th Floor  
 URS Centre  
 13 - 15 College Hill  
 Auckland  
 P.O. Box 821  
 Auckland  
 New Zealand  
 Tel 09 355 1300  
 Fax 09 355 1333

POTENTIAL RIPARIAN PLANTING			
File: 42068778\_mouse.mxd	Designed: <b>FP</b>	Status <b>DRAFT</b>	
Scale: 1:20,000	Drawn: <b>FP</b>		
Original Size: <b>A3</b>	Checked: <b>JG</b>	Drawing Number	Rev
Date Created: <b>18 Feb 2010</b>	Approved: <b>JB</b>	<b>Figure 9</b>	<b>A</b>