

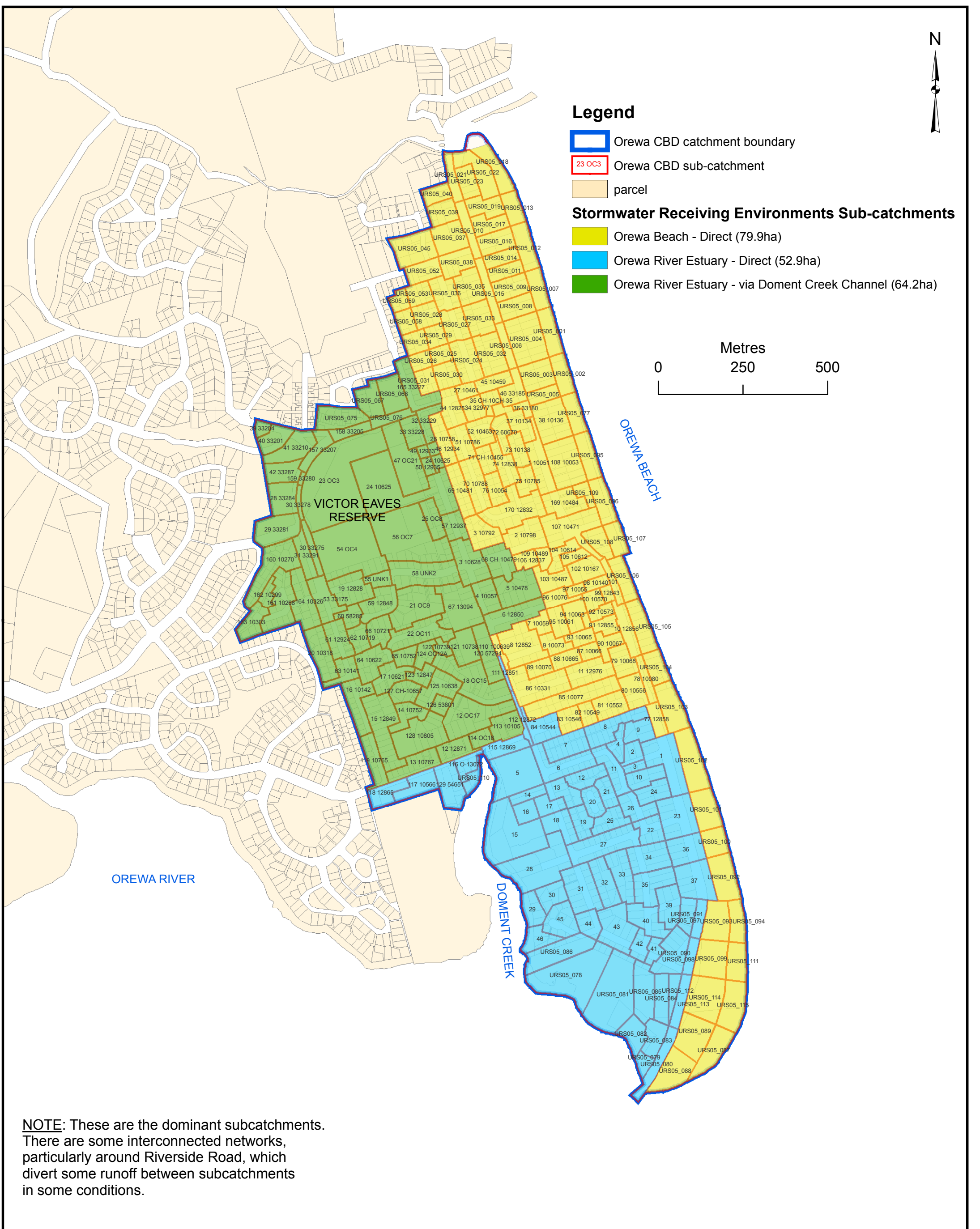
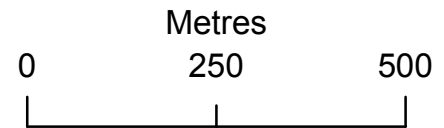


Legend

- Orewa CBD catchment boundary
- 23 OC3 Orewa CBD sub-catchment
- parcel

Stormwater Receiving Environments Sub-catchments

- Orewa Beach - Direct (79.9ha)
- Orewa River Estuary - Direct (52.9ha)
- Orewa River Estuary - via Doment Creek Channel (64.2ha)



NOTE: These are the dominant subcatchments. There are some interconnected networks, particularly around Riverside Road, which divert some runoff between subcatchments in some conditions.

Rev	Description	App	Date



URS New Zealand
 Engineering and Environmental Management
 6th Floor
 URS Centre
 13 - 15 College Hill
 Auckland
 P.O. Box 821
 Auckland
 New Zealand
 Tel 09 355 1300
 Fax 09 355 1333

Project: Orewa CBD Integrated Catchment and Network Management Plan			
Title: Stormwater Catchments, Subcatchments and Receiving Environments			
File: 420658171 FIGURE_2_4_1.mxd	Designed: ATS	Status: DRAFT	
Scale: 1:10,000	Drawn: FP		
Original Size: A3	Checked: ATS	Drawing Number: Figure 2-4	Rev: A
Date Created: 7 Jul 2009	Approved: NLF		